



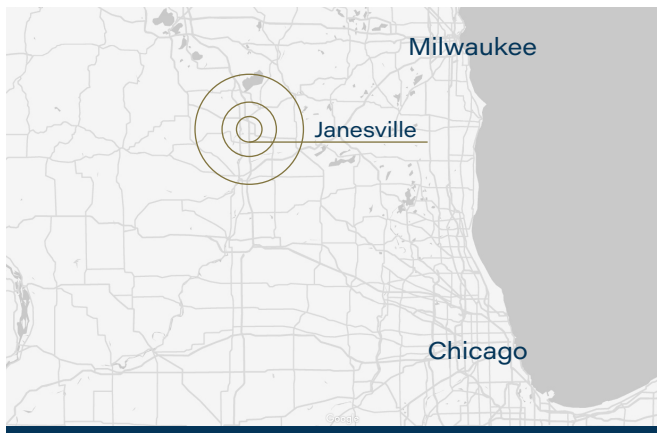
# UPTOWN *Janesville*

2500 Milton Avenue, Janesville, WI 53545

## HIGHLIGHTS

- Largest enclosed shopping venue in Rock County
- More than 28,000 cars pass by daily
- More than 7 million shoppers visit annually
- Easy access from the interstate and highway 26
- Partners with many community organizations to host events
- Offers a unique variety of specialty stores as well as national brands

## DEMOGRAPHICS

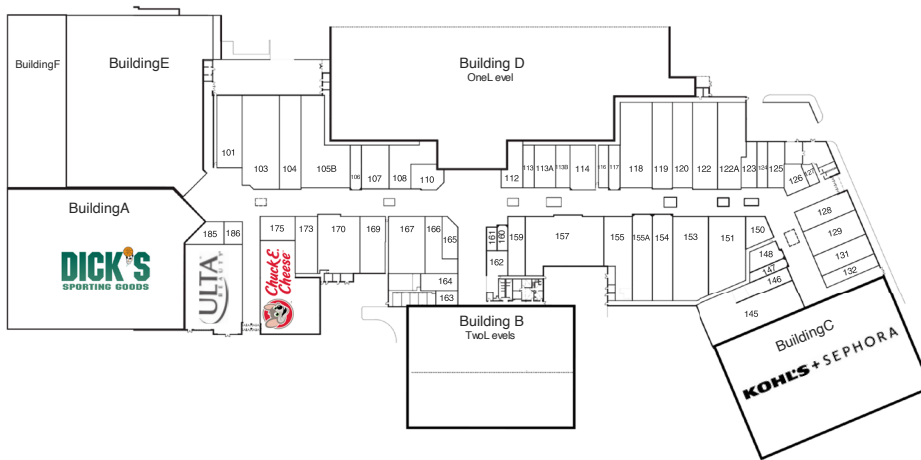


Miles	5	10	20
POPULATIONS	68,460	94,956	267,861
HOUSEHOLDS	27,865	38,441	104,938
AVG HH INCOME	\$75,183	\$76,871	\$74,871

RACINE LEAHY, DIRECTOR OF LEASING  
1445 North Loop West | Suite 625 | Houston, TX 77008  
314.267.6596 | rleahy@rockstep.com | www.rockstep.com

RockStep  
CAPITAL

# FLOOR PLAN



Join these national brands  
at Uptown Janesville!

AMERICAN EAGLE  
OUTFITTERS

claire's

JOURNYS

Bath  
& Body  
Works

ULTA  
BEAUTY

CHUCK E. CHEESE'S

zumiez

DICK'S  
SPORTING GOODS

HIBBETT  
SPORTS

KOHL'S + SEPHORA

rue21

SPENCER'S

SHOE DEPT.

BOOKS-A-MILLION

GameStop

LENSCRAFTERS

FINISH LINE

# LOCAL AREA



This document has been prepared by RockStep Capital for advertising and general information only. RockStep Capital makes no guarantees, representations, or warranties of any kind, expressed or implied, regarding the information including, but not limited to, warranties of the content, accuracy and reliability. Any interested party should undertake their own inquiries as to the accuracy of the information. RockStep Capital excludes unequivocally all inferred or implied terms, conditions, and warranties arising out of this document and excludes all liability for loss and damages arising there from. This publication is the copyrighted property of RockStep Capital and/or its licensor(s). ©2023 All rights reserved.